

Spectator Behaviour

@playbytherules



create a positive culture



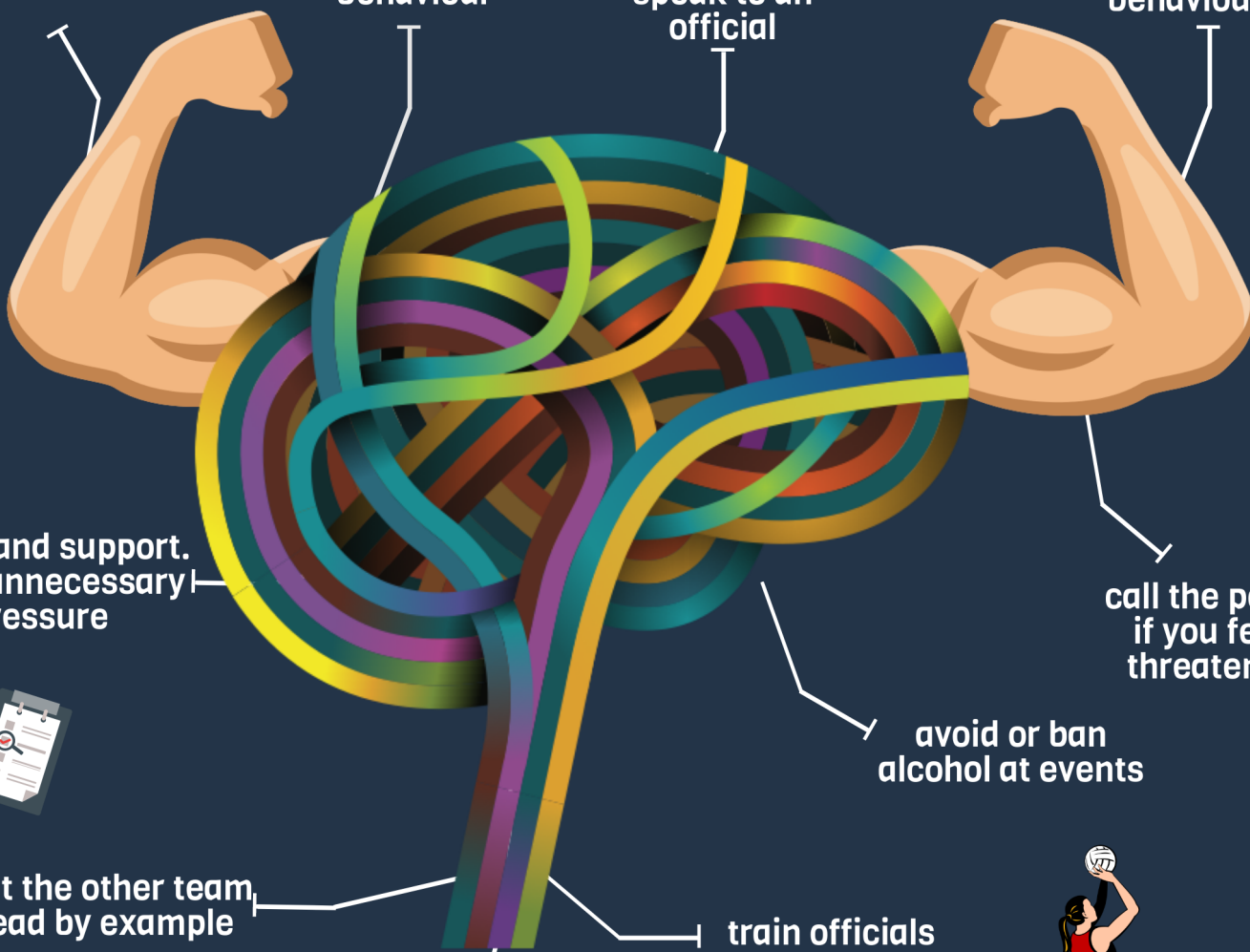
refrain from threatening behaviour



ask people to stop bad behaviour or speak to an official



report inappropriate behaviour



praise and support. avoid unnecessary pressure



respect the other team, and lead by example



reinforce messages of fairness and respectful behaviour

train officials and coaches



call the police if you feel threatened

avoid or ban alcohol at events



making sport inclusive, safe and fair.

For the full policy go to <https://www.playbytherules.net.au/resources/templates/spectator-behaviour-policy>